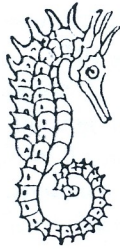


C. B. P. 1990  
6/8



# ARQUIVOS DO MUSEU BOCAGE

Nova Série, Vol. I, n.º 43, pp. 621-624 4 de Abril de 1990

## FIRST RECORD OF *THOROGOBIUS EPHIPIATUS* (LOWE, 1839) (PISCES, GOBIIDAE) FOR THE AZORES

JOSÉ N. AZEVEDO (1), ANA I. NETO (1) & LUÍS M. ARRUDA (2)

The Azores are a group of nine islands stretching across the Mid-Atlantic ridge, from 36° 55' N and 25° 01' W to 39° 43' N and 31° 07' W. The gobiid fauna of these islands is not well known. From the 30 species of gobies occurring in the Northeastern Atlantic only *Gobius paganellus* LINNAEUS, 1758 has been reliably identified (ARRUDA, 1979; MILLER, 1984).

The leopard-spotted goby, *Thorogobius ephippiatus* (LOWE, 1839) has been recorded in the Eastern Atlantic, from Sweden to Madeira and the Canaries, and in the Mediterranean, occurring in crevices and gullies of sublittoral rocky grounds (MILLER, 1969, 1986).

The aim of this note is to record the presence of *T. ephippiatus* for the Azores.

A total of 16 individuals were caught on the coast of S. Miguel (Lagoa, 7m depth and Fenais da Luz, 2m depth). In addition, numerous other individuals were seen. They occurred sublittorally in narrow open caves with

(1) Departamento de Biologia, Universidade dos Açores, R. Mãe de Deus, 9502 Ponta Delgada codex, Portugal.

(2) Faculdade de Ciências, Universidade de Lisboa, Rua da Escola Politécnica, 58, 1294 Lisboa codex, Portugal.

sandy bottom, as well as in rock crevices. Aqualung equipment and a small hand net were used.

The individuals caught were registered in the collections of the MUSEU CARLOS MACHADO (MCM), Ponta Delgada (numbers 520, 521 and 522.1-522.8) and MUSEU BOCAGE (MB), Lisbon (number 3412).

The meristic characters are as follow [range (mean  $\pm$  standard deviation)]: (*a*) scales in lateral series 34-38 ( $35.7 \pm 1.4$ ); (*b*) number of fin rays in the first dorsal fin VI; (*c*) in the second dorsal fin I + 11-12 ( $11.1 \pm 0.3$ ); (*d*) in the left pectoral fin 17-19 ( $18.1 \pm 0.7$ ); and (*e*) in the anal fin I  $\pm$  10-11 ( $10.1 \pm 0.3$ ). The terminal bifid ray of second dorsal and anal fins was counted as one.

The arrangement of the sensory papillae of the head is illustrated in figure 1. All specimens have long anterior dorsal rows *g* and *x*, rows *o* meeting in dorsal midline, suborbital row *b* extending anteriorly through row 5 towards row 4 and oculoscapular row *z* descending past pore  $\gamma$  to approach row *b*. Some variation was, however, observed on row *d*. It was either (*a*) continuous, (*b*) broken with both ends superposing between rows 2 and 3 (see figure 1) or (*c*) crossed by row 3 (percent of occurrence on both sides 0.41, 0.53 and 0.06, respectively).

These captures represent a considerable westward extension of the geographical distribution of this species

#### SUMMARY

The first record of the gobiid fish, *Thorogobius ephippiatus* at the Azores is noted, based on 16 individuals caught and also numerous sightings. Number of scales in lateral series and of fin rays in the first and second dorsal, left pectoral and anal fins are given. The arrangement of sensory papillae on the head is described.

#### SUMÁRIO

Nesta nota refere-se a primeira captura do peixe da família Gobiidae, *Thorogobius ephippiatus* nos Açores, com base em 16 indivíduos capturados e ainda em vários outros observados. Referem-se os números de escamas nas séries laterais e de raios na primeira e segunda barbatanas dorsais, na peitoral esquerda e na anal. Descreve-se o arranjo das papilas sensoriais da cabeça.

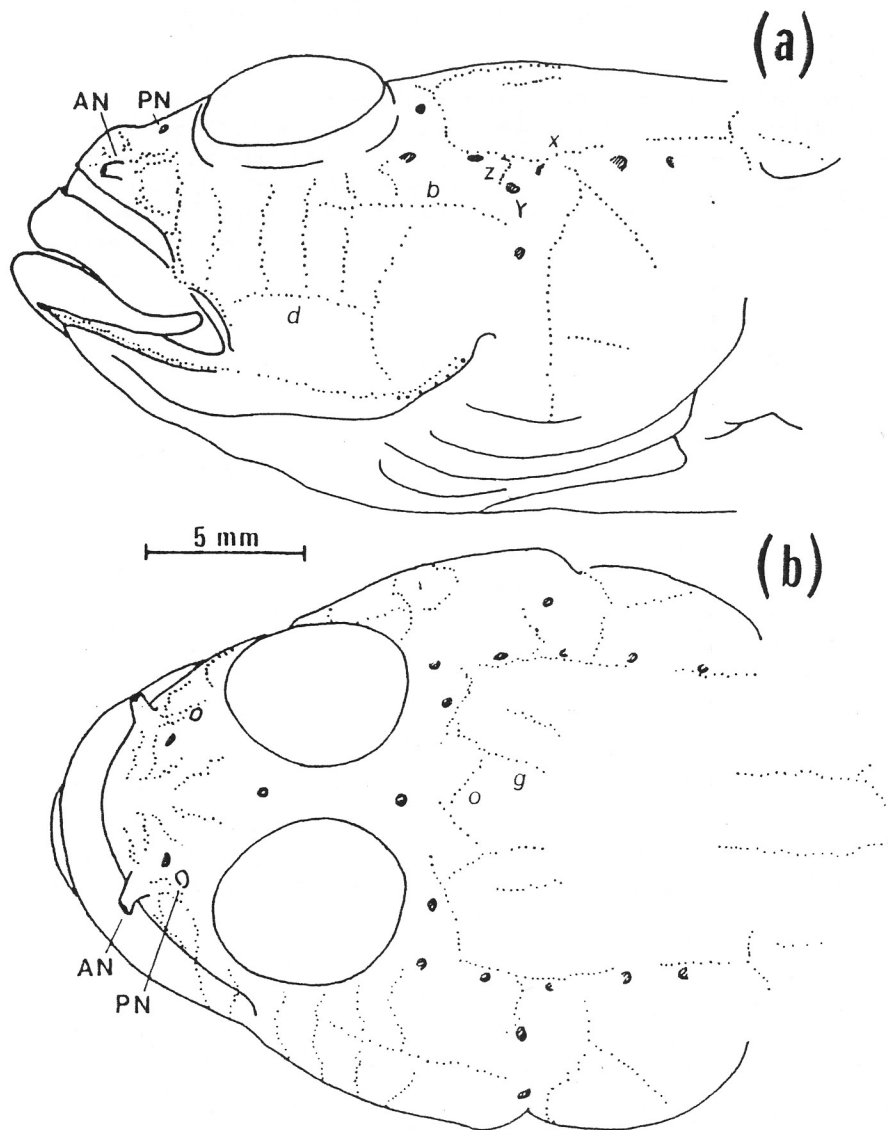


FIG. 1.— Lateral line sensory papillae and canal-pores (cross-hatched) of the head of *T. ephippiatus* from the Azorean islands (male, 83 mm total length, MCM 521). (a) lateral view and (b) dorsal view; terminology of rows and canal pores according to Sanzo (1911); AN anterior nostril and PN posterior nostril.

## REFERENCES

- ARRUDA, L. M., 1979. On the study of a sample of fish captured on the tidal range of Azores. *Bolm. Soc. port. Ciên. nat.*, **19**: 5-36.
- MILLER, P. J., 1969. Systematics and biology of the leopard-spotted goby, *Gobius ephippiatus* (Teleostei: Gobiidae), with description of a new genus and notes on the identity of *G. macrolepis* Kolombatovic. *J. mar. biol. Ass. U. K.*, **49**: 831-855.
- , 1984. The gobiid fishes of temperate Macaronesia (eastern Atlantic). *J. Zool., London*, **204**: 363-412.
- , 1986. Gobiidae. In: *Fishes of the North-eastern Atlantic and Mediterranean*, **3**: 1019-1085 (P. J. P. Whitehead, M.-L. Bauchot, J.-C. Hureau, J. Nielson and E. Tortonese, Eds.). Unesco, Paris.
- SANZO, L., 1911. Distribuzione della papille cutanee (organi ciatiforme) e suo valore sistematico nei Gobi. *Mitt. zool. Stn. Neapel*, **20**: 249-328.

ADDENDUM — Two other specimens were caught during our participation in the *Expedição Açores 89, Ecologia e Taxonomia do litoral marinho*: (1) Fayal island (Monte da Guia, W-side), 13m depth, cleft, collecteur R. A. Patzner, (meristic characters as above: 37, VI, I + 11, 18, I + 10; row *d*: continuous); (2) Pico island (S. Roque), 8 m depth, cave, collectors R. A. Patzner and R. S. Santos, (meristic characters: 36, VI, I + 11, 18, I + 10; row *d*: continuous).

Conselho de Redacção:  
Prof. Dr. CARLOS ALMAÇA  
Dr.<sup>a</sup> ANA MARIA NEVES

Editor:  
MUSEU BOCAGE  
R. Escola Politécnica,  
1200 LISBOA